

# Sunshine Coast Council Draft Integrated Transport Strategy

Providing a smart, integrated, safe and efficient transport system for the Sunshine Coast.

## About the Draft Integrated Transport Strategy

The Draft Integrated Transport Strategy is now on display to the community. View the draft strategy and share your thoughts.

The consultation period closes on 15 June 2018.

www.haveyoursay.sunshinecoast.qld.gov.au

## Introduction to the Draft Integrated Transport Strategy

The Draft Integrated Transport Strategy is an important part of council's commitment to long-term transport planning for the Sunshine Coast. Through long-term planning, council aims to maintain our lifestyle advantages and the distinctive character of our region's communities.

The draft Integrated Transport Strategy aims to respond to the challenges and opportunities facing our region, as well as outlining council's commitment to addressing the Sunshine Coast's transport needs.

It identifies the roles and responsibilities of other levels of government, private industry and the community.

It outlines a vision to achieve a connected, smart, integrated, safe and efficient transport system that contributes to the region's economic viability, sustainability and lifestyle.



Cyclists in Caloundra South

To achieve the vision a people focussed approach to planning our transport system is applied.

This strategy will position us for the future transport challenges and help us to shape a region - and a future - that is healthy, smart and creative.

## How was the Draft Integrated Transport Strategy developed?

The Draft Integrated Transport Strategy was developed with input from the community gathered through market research and other recent community consultation undertaken by council.

It is aligned to relevant council and other government strategies and policies.

It considers how we currently travel in the region and outlines the known transport network deficiencies that government needs to address.

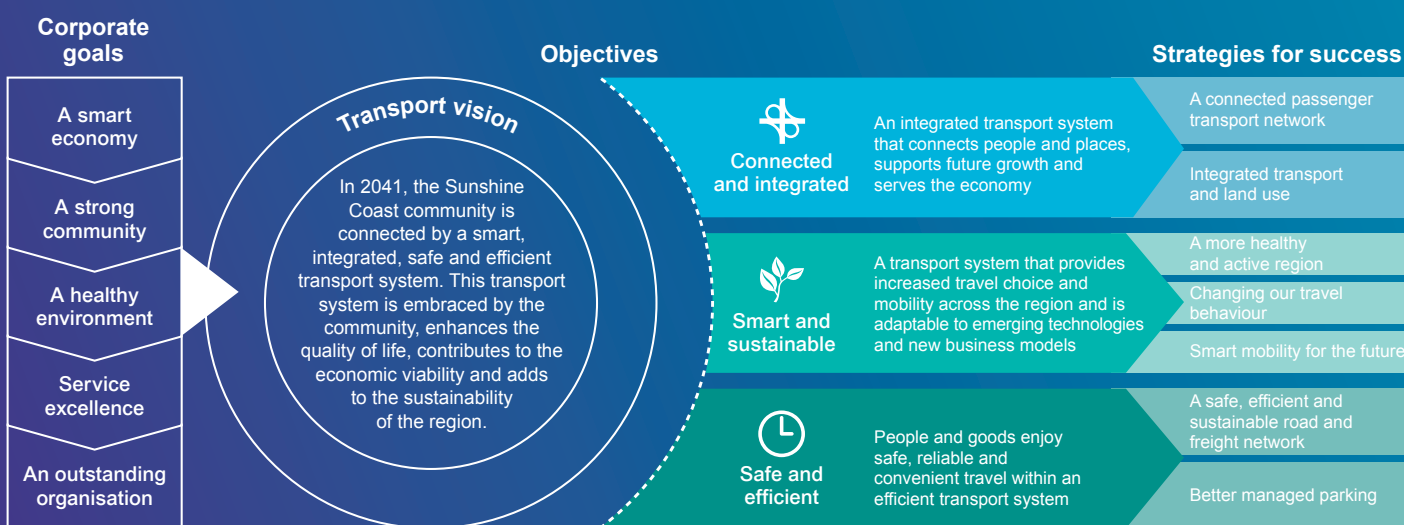


Cars travelling on Montville Mapleton Road

The draft Integrated Transport Strategy outlines the challenges we need to respond to, including a growing and ageing population, high car dependency and congestion, timely provision of infrastructure and the provision and availability of public transport.

It identifies the opportunities we need to position for, including building our new economy, integrating transport and land use, creating better travel choices and embracing smart mobility.

## Goals, vision, objectives and strategies of the Draft Integrated Transport Strategy



### Connected and integrated

In 2041, the Sunshine Coast will have a connected passenger network that provides high-frequency public transport connections, as well as local and feeder connections, that meet customer expectations. The integration of transport and land use will be improved by increasing consolidation in identified growth corridors, developing connected and contained centres, and planning for sustainable travel and for freight.

### Smart and sustainable

The Sunshine Coast will be a more healthy and active region that has access to integrated active travel options and improved active networks and infrastructure, providing quality connections that are safe and accessible for all users.

Through increased travel awareness, our community will change its travel behaviour to adopt more sustainable options. This will be supported by travel change programs and services. The Sunshine Coast will embrace smart mobility for the future. It will benefit from innovations such as driverless and electric vehicles, personal mobility devices, and smart mobility platforms and technologies.

### Safe and efficient

Through network investment and road management, the Sunshine Coast's road network will be safe, efficient and sustainable. It will be resilient to weather and events, have better freight connections and adopt sustainable options that support our environment. The Sunshine Coast will have better managed parking that can be achieved through demand management and the delivery of new parking and strategies to maximise existing parking.

## How do we achieve a sustainable transport network?

As identified by the state government in its recently released South East Queensland Regional Plan, the Sunshine Coast will need to accommodate almost 200,000 more people through to 2041. The increased population impacts will be significant and that is why council has undertaken extensive planning to accommodate our new residents.

Increasing the options for travel and reducing our overwhelming reliance on private cars is key to achieving a sustainable transport network in the future.

	Current	Trend	2041 Target	
Car and freight	85%	↓	70%	Car and freight
Active	12%	↑	20%	Active
Passenger transport	3%	↑	10%	Passenger transport

The Draft Integrated Transport Strategy outlines specific targets to guide planning and investment of infrastructure and programs that will encourage and assist the community to use more sustainable forms of travel. However, the community will ultimately decide whether these targets are achievable through individual travel choices.

While council is not responsible for public transport, it will continue to maintain a strong advocacy approach with the state and federal governments and look at opportunities for private investment with a view to securing an effective, integrated public transport solution for the region. This solution is highlighted by light rail and supported with more frequent bus services across the region.



## Funding and investment

All levels of government and the private sector have a role to play in the planning, delivery and management of our transport system. Investment from all levels of government will be critical to achieving the targets outlined in the Draft Integrated Transport Strategy.

Council has already identified priority transport projects that will be essential to providing an efficient, safe and integrated transport system for the Sunshine Coast. These projects primarily require support and funding from other levels of government, as well as council.

Investment in transport infrastructure is also necessary to provide opportunities for non-infrastructure solutions, particularly additional public transport services.

New emerging technologies such as autonomous vehicles, smart mobility and travel behaviour programs have the potential to revolutionise the mix of transport options and how travel occurs.

The Draft Integrated Transport Strategy will be implemented in partnership with other levels of government and the private sector.

Council is willing to partner or be a catalyst for improvement and innovation to the benefit of our community. By approaching the transport system as one network, we can achieve greater outcomes.

A coordinated transport infrastructure pipeline that matches the capacity of the transport system with redevelopment and major growth areas will deliver confidence for investment in our local economy.

## Priority transport projects

In August 2017, council endorsed a Transport Priorities map – a list of 26 priorities that council considers important for the future of how we travel within, to and from the Sunshine Coast.



Seeking a light rail hero image shot...

Our top five transport infrastructure projects, in no particular order, are:

- North Coast Rail duplication
- Sunshine Coast Light Rail
- Mooloolah River Interchange
- Caloundra access improvements
- Bruce Highway: Caboolture to Caloundra Road six laning

## Next Steps

The draft Integrated Transport Strategy is now on display. Feedback from this consultation phase will be taken into account when finalising the strategy that will be presented to council for adoption.

### Have your say

Council is actively listening to the community and is seeking feedback on the draft strategy. Information received during the consultation period will inform future discussions with council and will help with finalising the Sunshine Coast Council Integrated Transport Strategy.

### Have your say before Friday 15 June 2018.

You can view the draft strategy and provide your comments online at [www.haveyoursay.sunshinecoast.qld.gov.au](http://www.haveyoursay.sunshinecoast.qld.gov.au).

Or view a printed copy at:

- Council's Customer Service Centres at Maroochydore, Nambour and Caloundra
- Sunshine Coast libraries

Alternatively, post your written comments to

- Sunshine Coast Council, Draft Integrated Transport Strategy, Locked Bag 72, Sunshine Coast Mail Centre, Qld, 4560.

Or email comments to

- [ITSfeedback@sunshinecoast.qld.gov.au](mailto:ITSfeedback@sunshinecoast.qld.gov.au)

## Have your say before Friday 15 June 2018.

[www.haveyoursay.sunshinecoast.qld.gov.au](http://www.haveyoursay.sunshinecoast.qld.gov.au)

Figure 1: Priority transport projects

\*Numbering is not in order of priority

\*Area types are based on Spatial Concept Map (Figure 7) from the Urban Transformations – Directions Paper for the Future for the Sunshine Coast 2017

